

NITEforce

SPINNER CASE TUMBLER

Overview

INSTRUCTIONS FOR USE

NITEforce Spinner Case Tumbler is designed for brass case cleaning. Clean brass processing extends the life of sizing dies and other reloading equipment and also is easier to handle throughout the reloading process. NITEforce Spinner Case Tumbler should be only used with dry Corn Cob or dry Walnut Cob tumbling media. Tumbling time lengths are depending condition of cases.



Operating Instructions

Brass Case Cleaning - DIRTY or DUSTY Cases

Incase if the brass cases are dirty or dusty, it is recommended pre-clean those before depriming, sizing, deburring and trimming. Sandy and dirty brass cases might violate your sizing dies and other reloading equipment.

30min Pre-cleaning when cases still has used primers seated:

30min Pre-cleaning can be made with NITEfore Spinner Case Tumbler using corn cob media or walnut cob tumbling media. Pre-cleaning is removing all dirt which could cause damage to your sizing / reloading dies.

120min Cleaning when cases are deprimed, sized, trimmed to the lenght and deburred:

120min Cleaning tumbling effect is removing case lube / sizing lubricants after case sizing, cleaning cases inside / outside. This final stage you can add and mix small amount of case polishing (brass polish) solvent to dry media. It will enhance the brass case polishing.

NOTE: Do not use any Acid solutions (corrosive) or flammable solutions inside the bowl!

- ❖ Spinner Case Tumbler must be used on a flat hard surface (prefer concrete floors)
 - Do not use tumbler on elevated surface the (tumbler will vibrate and may walk off an elevated surface)
 - Do not use tumbler on a table
 - Do not use on carpet
- ❖ While tumbling process is on, close supervision is necessary
 - Do not leave the tumbler alone without adult supervisor
 - This appliance should not be used by children or nearby children (it is not a toy)
 - Never operate this appliance unattended
- ❖ This electrical appliance is designed for indoors use. Do not use outdoors
- ❖ When shutting OFF the machine; Remove the power adapter cord plug from wall outlet
 - When this appliance is not in use, remove the power adapter cord plug from wall outlet
- ❖ Minimize the risk of electrical shock; Do not put this electrical appliance into water or other liquid

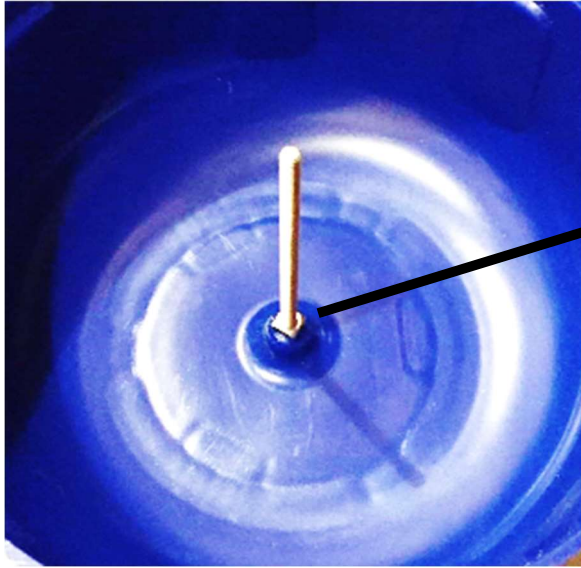


INCASE IF NEEDED:

Small amount (20-30ml) of case polishing solvent mixed to dry tumbling media will enhance the brass case polishing process (sold separately)

NITEforce

IMPORTANT: Attaching the Bowl to Motor base with Square Nut



Tighten the last square nut bottom of the bowl. This will keep the tumbling bowl its place. Check the tightening by hand every time before start tumbling

**ASK FROM YOUR DEALER INCASE IF THERE ARE ANY OPEN
QUESTIONS REGARDING THE PRODUCT OR ITS USE!**

● Cautions

- ✓ Do not place loaded ammunition inside the bowl! Only use bowl for empty brass cases with used primer or removed primer (deprime)
- ✓ Always protect your eyes and hands when using dry corn cob or walnut cob tumbling media
- ✓ Circulate used tumbling media particles under local legislations
 - Always wear protective gloves and safety glasses when handling used tumbling media
- ✓ Do not use corrosive Acid liquid solutions in the bowl
- ✓ Do not use Flammable liquid solutions in the bowl
- ✓ Keep hands, hair and loose clothing away from the vibrating drum. They may grab or pull while motor / bowl are in operation
- ✓ Total weight of the bowl should not exceed 5kg (brass cases + tumbling media)
- ✓ Before starting the tumbler, ensure that bowl is safely attached to motor base and clear lid is sealing the bowl!
- ✓ All brass cases should be carefully checked (one by one) after the tumbling to ensure that all tumbling media have been removed from inside the case. Check especially the primer pockets and primer neck!

● Frequently Asked Questions

How often should I replace my Tumbling Media (Corn Cob or Wallnut)?

It depends the condition of your polished cases. Sandy cases are making the tumbling media single use. When the tumbling media looks dark or grey, it is time to change it. Usually you can use the same tumbling media 3-4 times if the brass case starting condition is not too dirty. You can "enhance" the tumbling media effect by adding small amount of brass case polishing solvent (sold separately).



1 YEAR WARRANTY

This product is warranted to be free from defects in material and workmanship for 1 year from the original date of purchase when purchased through an authorized dealer. NITEforce will, at its option, repair or replace your product with the same or comparable model, free of charge (shipping charges may apply) for a period of (1) one year from the original date of purchase in the event of a defect in materials or workmanship occurring with normal use. This warranty only extends to the original retail purchaser. Purchase receipt or other proof of date of original purchase is required before warranty performance. The warranty on any replacement product provided under this warranty shall be for the unexpired portion of the warranty period applicable to the original product. This warranty extends solely to failures due to defects in materials or workmanship occurring during normal use. It does not cover normal wear of the product.

This warranty is void if:

- 1.The unit has been used incorrect, opened or punctured
- 2.The unit has been immersed in water or other liquids, allowed to be filled with dirt or dust or otherwise physically misused
- 3.The 1 year warranty period has expired
4. If the product fails to function properly as a result of accident, misuse, abuse, neglect, mishandling, misapplication, non-compatible accessories, faulty installation, setup, adjustments, improper maintenance, alteration, maladjustment of controls, modification, power surges, service by anyone other than NITEforce or NITEforce authorized service center or acts beyond the manufacturer's control.